

TREMDRAIN (OPTIONAL)
PROVIDES VAPOR DIFFUSION

TOPPING SLAB

BALLAST AS FILLER

INSULATION

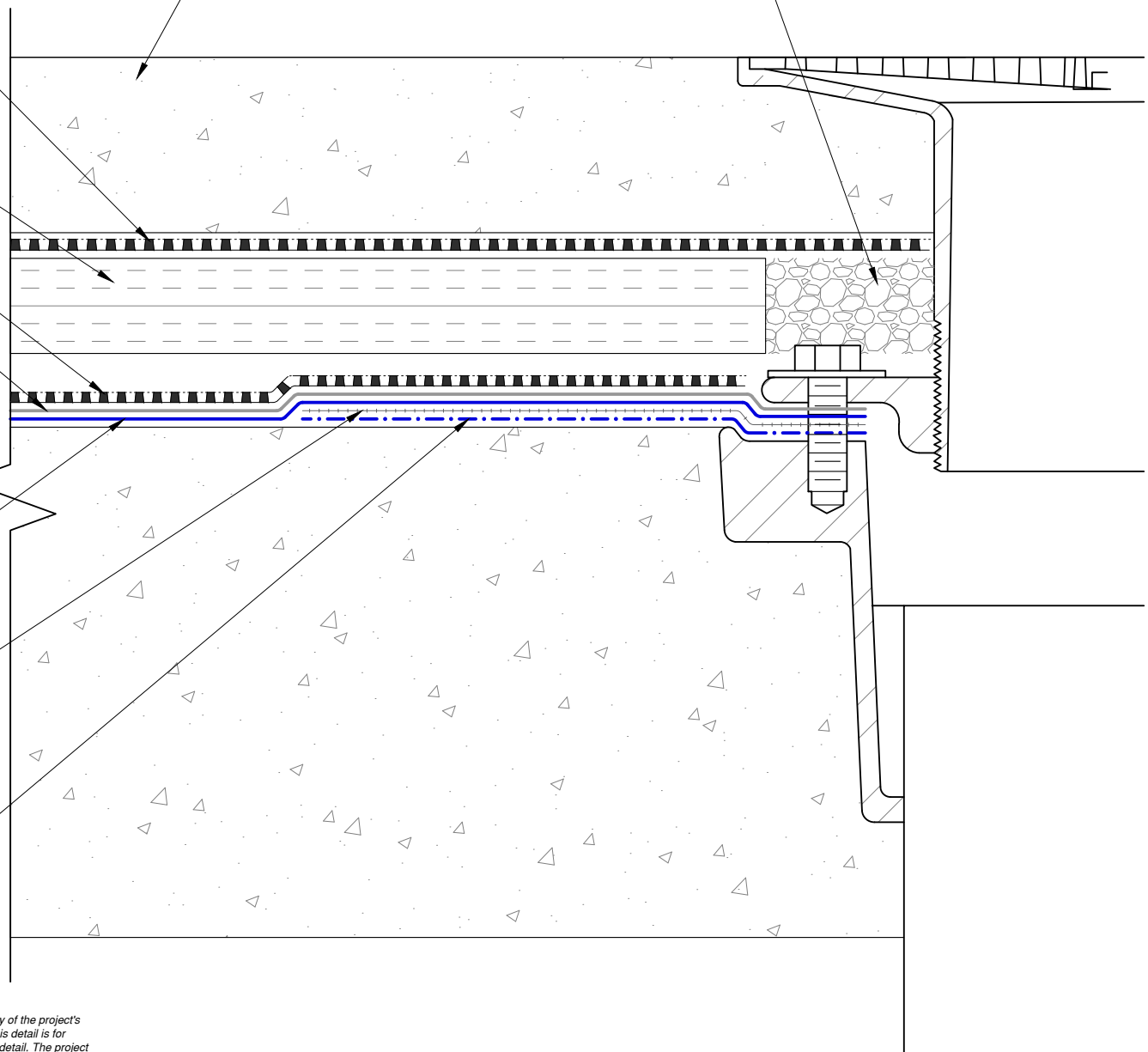
TREMDRAIN,
AS SPECIFIED

TREMCO PROTECTION COURSE

TREMPROOF 201/60

REEMAY FABRIC, FULLY
EMBEDDED IN MEMBRANE

DETAIL COAT OF TREMPROOF 201/60
AT 30 MILS



The architecture, engineering, and design of the project using the Tremco products are the responsibility of the project's design professional. All products and systems must comply with local building codes and standards. This detail is for general information and guidance only and Tremco specifically disclaims any liability for the use of this detail. The project design professional determines, in its sole discretion, whether this detail or a functionally equivalent detail is best suited for the project. This detail is subject to change without notice. Contact Tremco to ensure you have the most recent version.

TREMProof 201/60



Detail: TREMProof 201/60 at Split Slab Bi-Level Drain Detail with Reemay Fabric

File Name:

Drawn by: KAB

Checked by: WH

Scale: NTS

Date: 3/4/2022

C-201 60-D-03



Tremco Technical Support: 866-209-2404

www.tremcocpg.com

Construction Products Group